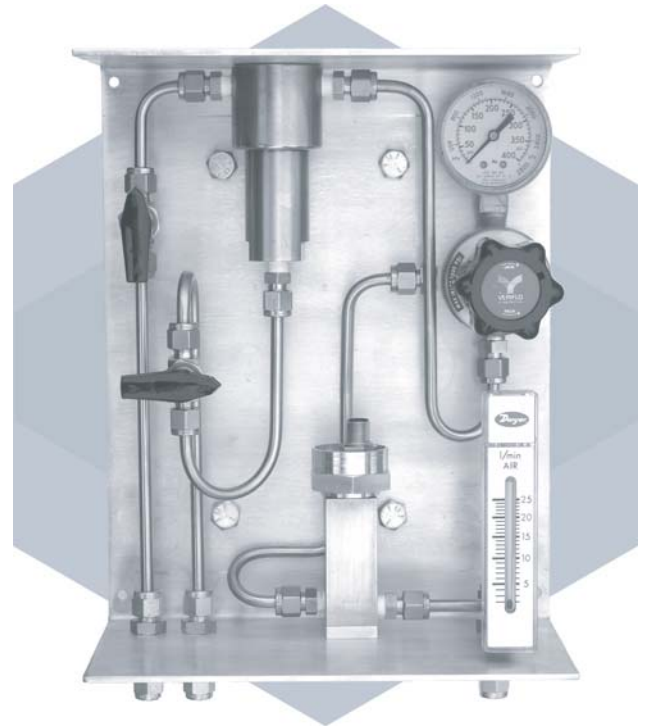
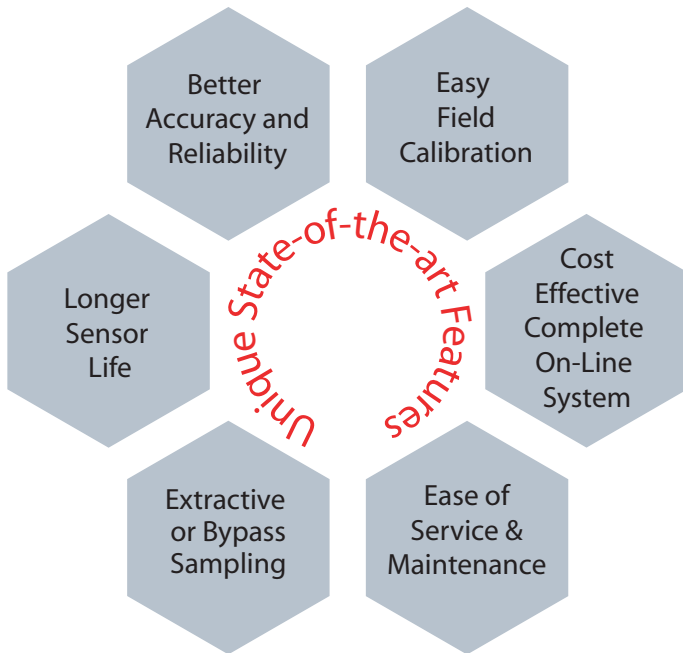


PSS

PhyMetrix Sampling Systems



You will Save Time & Money while achieving optimum performance for your moisture measurement.



more FEATURES

- Mounting on wall or 2" pipe
- Fiberglass or stainless steel enclosures
- Multiple stream inlets
- Shutoff isolation for calibration and service
- Pressure regulation for optimal measurement
- Particulate filtration and Liquid knock-out
- Temperature control
- Automatic Calibration
- Hazardous Area Installations
- As built system drawings
- Quality Assurance
- Built to API Recommended Practice 555

APPLICATIONS

- Petrochemical
- Industrial Gases
- Natural Gas
- Power Generation
- Furnace Gas / Heat Treating
- Air Dryers
- Pharmaceutical
- Aerospace
- Medical



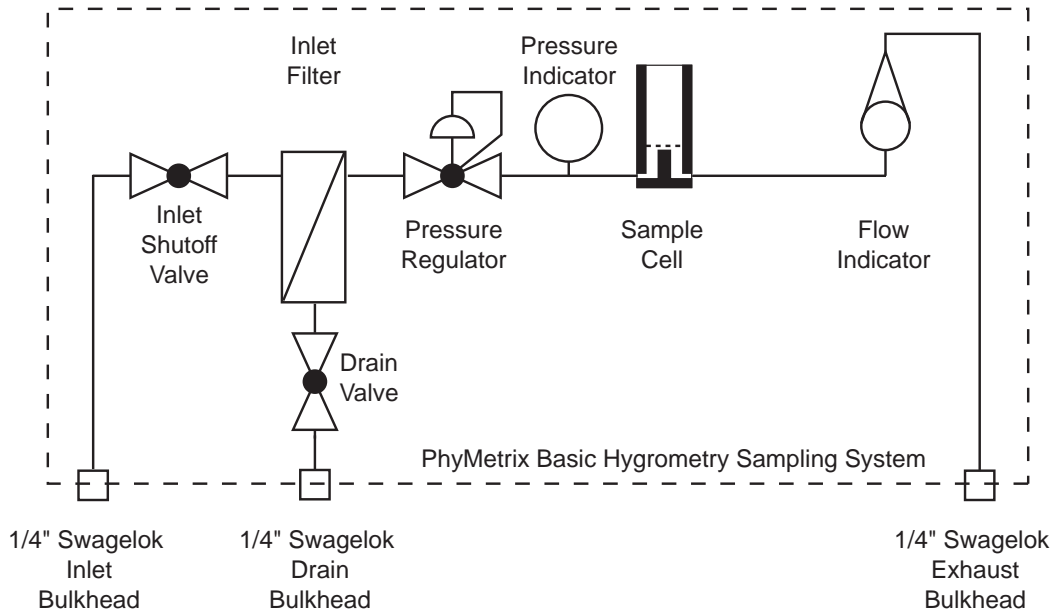
PhyMetrix, Inc.
Moisture Measurement
Innovation at work

- ◆ Test
- ◆ Measure
- ◆ Calibrate
- ◆ Quick
- ◆ Reproducible
- ◆ NIST Traceable

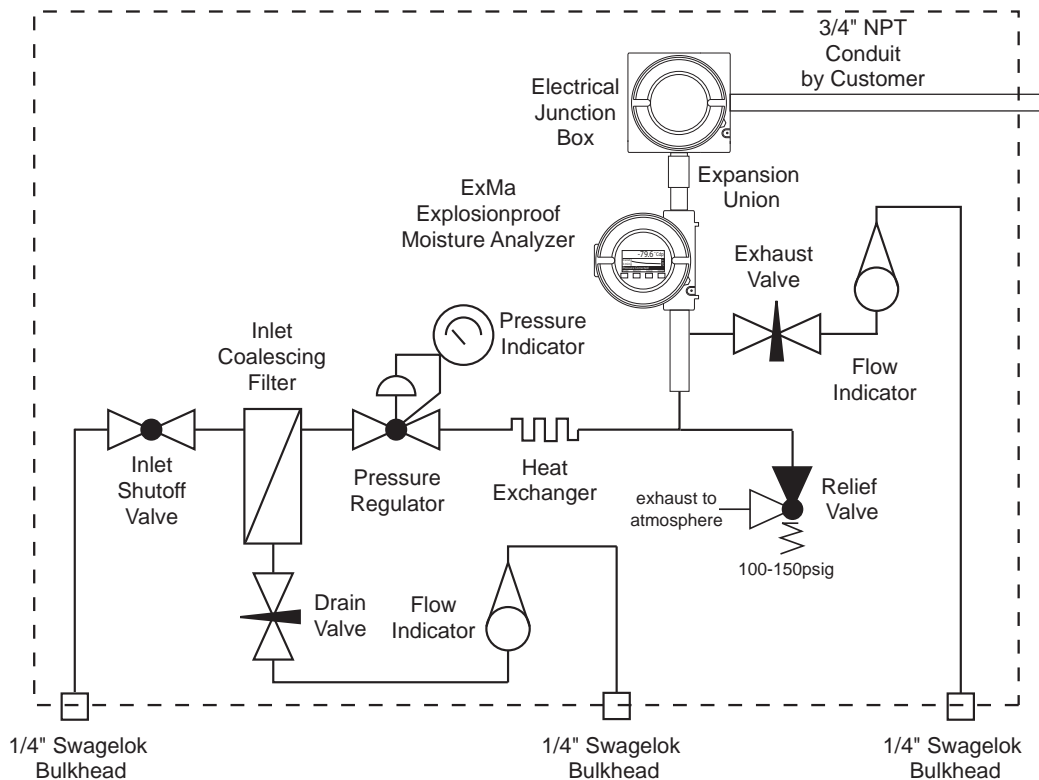
Proudly Designed, Developed and Manufactured in the USA



Basic Sample System



Natural Gas Sample System



PhyMetrix, Inc.
Moisture Measurement
Innovation at work

- ◆ Test
- ◆ Quick
- ◆ Measure
- ◆ Reproducible
- ◆ Calibrate
- ◆ NIST Traceable

Proudly Designed, Developed and Manufactured in the USA

